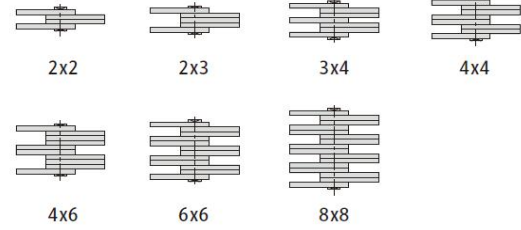
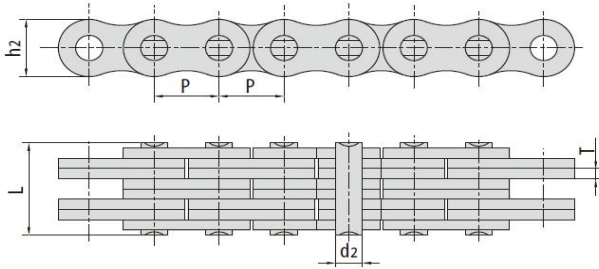


板式链
Leaf chains



链板组合
Plate lacing



LH/BL系列板式链条 Leaf chains (LH/BL series)

ISO 链号 ISO Chain No.	ANSI 链号 ANSI Chain No.	节距 Pitch	链板组 合 Plate lacing	链板高度 Plate depth	链板厚度 Plate thickness	销轴直径 Pin diameter	销轴长度 Pin length	抗拉强度 Tensile strength	平均抗拉 强度 Average tensile strength	每米长重 Weight per meter
		P		h_2 max	T max	d_2 max	L max	Q min	Q_0	q
		mm		mm	mm	mm	mm	kN	kN	kg/m
LH2022	BL1022	31.75	2x2	30.18	4.80	11.11	25.37	115.6	165.8	3.57
LH2023	BL1023		2x3				30.33	115.6	165.8	4.45
LH2034	BL1034		3x4				40.23	182.4	248.7	6.19
LH2044	BL1044		4x4				45.19	231.3	303.6	7.04
LH2046	BL1046		4x6				55.09	231.3	303.6	8.77
LH2066	BL1066		6x6				65.00	347	433.7	10.50
LH2088	BL1088		8x8				84.81	462.6	604.1	14.00
LH2422	BL1222	38.10	2x2	36.20	5.60	12.71	29.62	151.2	192.0	4.96
LH2423	BL1223		2x3				35.43	151.2	192.0	6.16
LH2434	BL1234		3x4				47.07	244.6	315.9	8.55
LH2444	BL1244		4x4				52.88	302.5	381.1	9.76
LH2446	BL1246		4x6				64.52	302.5	381.1	12.16
LH2466	BL1266		6x6				76.15	453.7	543.6	14.61
LH2488	BL1288		8x8				99.42	605	726.0	19.36
LH2822	BL1422	44.45	2x2	42.24	6.40	14.29	33.55	191.3	225.7	6.89
LH2823	BL1423		2x3				40.16	191.3	225.7	8.55
LH2834	BL1434		3x4				53.37	315.8	448.3	11.61
LH2844	BL1444		4x4				59.97	382.6	451.2	13.24
LH2846	BL1446		4x6				73.18	382.6	451.2	16.51
LH2866	BL1466		6x6				86.39	578.3	682.4	19.79
LH2888	BL1488		8x8				112.80	765.1	902.8	26.35
LH3222	BL1622	50.80	2x2	48.26	*7.20	17.46	39.01	289.1	341.1	8.78
LH3223	BL1623		2x3				46.58	289.1	341.1	10.90
LH3234	BL1634		3x4				61.72	440.4	519.6	15.15
LH3244	BL1644		4x4				69.29	573.8	680.4	17.27
LH3246	BL1646		4x6				84.43	578.3	680.4	21.53
LH3266	BL1666		6x6				99.57	857.4	1000.7	25.88
LH3288	BL1688		8x8				129.84	1156.5	1364.6	34.29

*: 有两种链板厚度，除上述表中标注的7.20mm之外，另一种厚度为7.52mm。

*: We have two kinds of chain plate thickness. Besides the 7.20mm in above table, the other thickness is 7.52 mm.