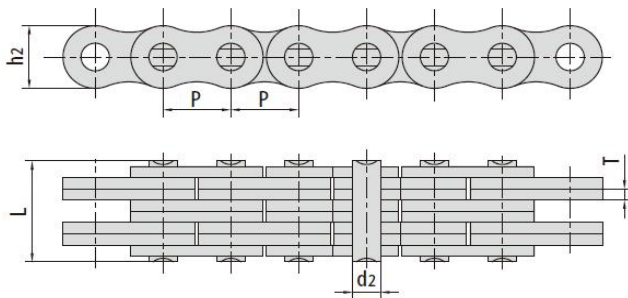
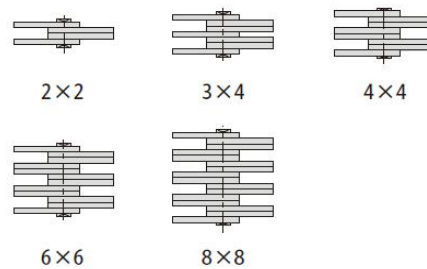


## 板式链

Leaf chains



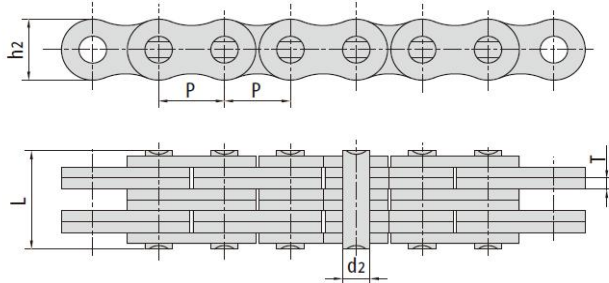
链板组合  
Plate lacing



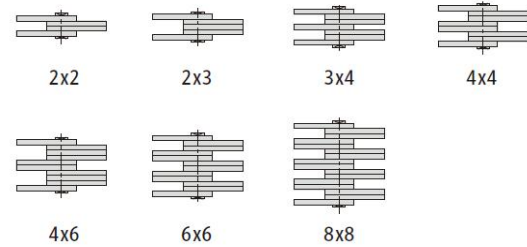
AL系列板式链条 Leaf chains (AL series)

JIS 链号 JIS Chain No.	节距 Pitch P	链板组合 Plate lacing	链板高度 Plate depth h <sub>2</sub> max	链板厚度 Plate thickness T max	销轴直径 Pin diameter d <sub>2</sub> max	销轴长度 Pin length L max	抗拉强度 Tensile strength Q min	平均抗拉强度 Average tensile strength Q <sub>0</sub>	每米长重 Weight per meter q
	mm		mm	mm	mm	mm	kN	kN	kg/m
AL322	9.525	2×2	7.7	1.30	3.58	6.80	9	10.2	0.23
AL344		4×4				11.60	18	20.0	0.46
AL422	12.700	2×2	10.4	1.50	3.96	8.30	14.7	16.9	0.39
AL444		4×4				14.40	29.4	35.2	0.74
AL466		6×6				20.50	44	52.7	1.13
AL522	15.875	2×2	12.8	2.03	5.08	11.05	24.5	28.6	0.64
AL534		3×4				17.00	36.8	46.0	1.10
AL544		4×4				19.40	48.9	62.4	1.25
AL566		6×6				27.50	73.4	93.8	1.79
AL622	19.050	2×2	15.6	2.42	5.94	13.00	33.4	44.4	0.87
AL644		4×4				22.70	66.7	78.8	1.70
AL666		6×6				32.20	100.1	118.6	2.53
AL688		8×8				42.20	133.4	156.6	3.37
AL822	25.400	2×2	20.8	3.25	7.92	16.20	57.9	68.6	1.57
AL844		4×4				29.40	115.7	135.6	3.08
AL866		6×6				44.20	173.5	202.3	4.62
AL888		8×8				55.50	231.4	245.0	6.12
AL1022	31.750	2×2	25.6	4.00	9.53	19.60	84.5	107.1	2.51
AL1044		4×4				36.40	169	203.6	4.95
AL1066		6×6				52.30	253.5	315.3	7.39
AL1088		8×8				68.50	338	421.2	9.83
AL1222	38.100	2×2	30.5	4.80	11.10	24.30	120.1	151.1	3.65
AL1244		4×4				43.80	240.2	299.7	7.05
AL1266		6×6				63.20	360.3	426.3	10.50
AL1288		8×8				82.60	480.4	568.4	14.03
AL1444	44.450	4×4	36.4	5.60	12.70	51.30	302.5	413.6	9.80
AL1466		6×6				74.50	453.7	620.4	14.66
AL1644	50.800	4×4	41.6	6.40	14.21	58.00	382.5	522.8	12.90
AL1666		6×6				83.80	573.8	783.6	19.27
AL1688		8×8				109.50	765	1045.5	25.64

## 板式链 Leaf chains



链板组合  
Plate lacing



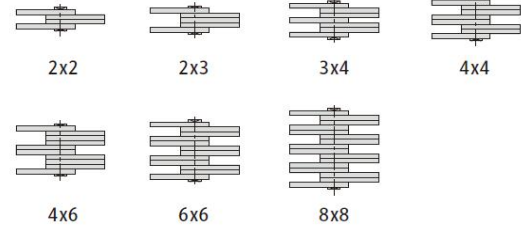
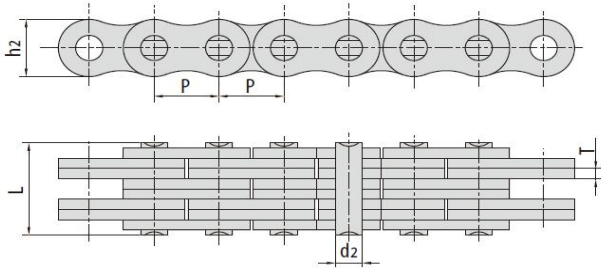
### LH/BL系列板式链条 Leaf chains (LH/BL series)

ISO链号 ISO Chain No.	ANSI链号 ANSI Chain No.	节距 Pitch	链板组合 Plate lacing	链板高度 Plate depth	链板厚度 Plate thickness	销轴直径 Pin diameter	销轴长度 Pin length	抗拉强度 Tensile strength	平均抗拉强度 Average tensile strength	每米长重 Weight per meter
		P		$h_2 \max$	T max	$d_2 \max$	L max	Q min	$Q_0$	q
		mm		mm	mm	mm	mm	kN	kN	kg/m
LH0822	BL422	12.70	2x2	12.07	2.03	5.09	11.05	22.2	27.6	0.60
LH0823	BL423		2x3				13.16	22.2	27.6	0.75
LH0834	BL434		3x4				17.40	33.4	41.4	1.05
LH0844	BL444		4x4				19.51	44.5	56.0	1.20
LH0846	BL446		4x6				23.75	44.5	56.0	1.46
LH0866	BL466		6x6				27.99	66.7	81.7	1.77
LH0888	BL488		8x8				36.45	89	109.4	2.32
LH1022	BL522	15.875	2x2	15.09	2.42	5.96	12.90	33.4	43.1	0.90
LH1023	BL523		2x3				15.37	33.4	43.1	1.10
LH1034	BL534		3x4				20.32	48.9	65.6	1.50
LH1044	BL544		4x4				22.78	66.7	84.5	1.80
LH1046	BL546		4x6				27.74	66.7	84.5	2.20
LH1066	BL566		6x6				32.69	100.1	125.1	2.65
LH1088	BL588		8x8				42.57	133.4	169.5	3.50
LH1222	BL622	19.05	2x2	18.11	3.25	7.94	17.37	48.9	68.2	1.50
LH1223	BL623		2x3				20.73	48.9	68.2	1.80
LH1234	BL634		3x4				27.43	75.6	102.8	2.50
LH1244	BL644		4x4				30.78	97.9	136.9	2.90
LH1246	BL646		4x6				37.49	97.9	136.9	3.60
LH1266	BL666		6x6				44.20	146.8	214.2	4.30
LH1288	BL688		8x8				57.61	195.7	217.7	5.80
LH1622	BL822	25.40	2x2	24.13	4.00	9.54	21.34	84.5	108.2	2.40
LH1623	BL823		2x3				25.48	84.5	108.2	3.00
LH1634	BL834		3x4				33.76	129	170.0	4.20
LH1644	BL844		4x4				37.90	169	214.6	4.80
LH1646	BL846		4x6				46.18	169	214.6	6.00
LH1666	BL866		6x6				54.46	253.6	324.5	7.20
LH1688	BL888		8x8				71.02	338.1	432.7	9.60

**板式链**  
Leaf chains



链板组合  
Plate lacing



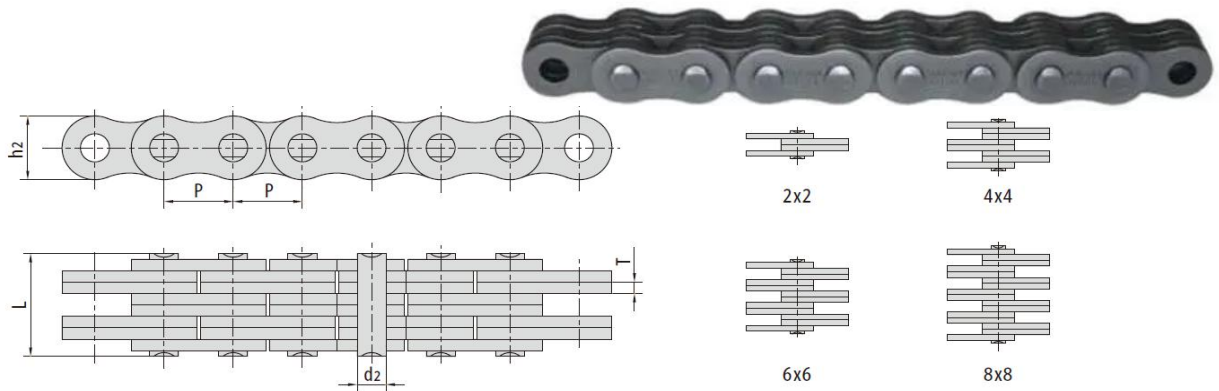
**LH/BL系列板式链条 Leaf chains (LH/BL series)**

ISO 链号 ISO Chain No.	ANSI 链号 ANSI Chain No.	节距 Pitch	链板组 合 Plate lacing	链板高度 Plate depth	链板厚度 Plate thickness	销轴直径 Pin diameter	销轴长度 Pin length	抗拉强度 Tensile strength	平均抗拉 强度 Average tensile strength	每米长重 Weight per meter
		P		$h_2$ max	T max	$d_2$ max	L max	Q min	$Q_0$	q
		mm		mm	mm	mm	mm	kN	kN	kg/m
LH2022	BL1022	31.75	2x2	30.18	4.80	11.11	25.37	115.6	165.8	3.57
LH2023	BL1023		2x3				30.33	115.6	165.8	4.45
LH2034	BL1034		3x4				40.23	182.4	248.7	6.19
LH2044	BL1044		4x4				45.19	231.3	303.6	7.04
LH2046	BL1046		4x6				55.09	231.3	303.6	8.77
LH2066	BL1066		6x6				65.00	347	433.7	10.50
LH2088	BL1088		8x8				84.81	462.6	604.1	14.00
LH2422	BL1222	38.10	2x2	36.20	5.60	12.71	29.62	151.2	192.0	4.96
LH2423	BL1223		2x3				35.43	151.2	192.0	6.16
LH2434	BL1234		3x4				47.07	244.6	315.9	8.55
LH2444	BL1244		4x4				52.88	302.5	381.1	9.76
LH2446	BL1246		4x6				64.52	302.5	381.1	12.16
LH2466	BL1266		6x6				76.15	453.7	543.6	14.61
LH2488	BL1288		8x8				99.42	605	726.0	19.36
LH2822	BL1422	44.45	2x2	42.24	6.40	14.29	33.55	191.3	225.7	6.89
LH2823	BL1423		2x3				40.16	191.3	225.7	8.55
LH2834	BL1434		3x4				53.37	315.8	448.3	11.61
LH2844	BL1444		4x4				59.97	382.6	451.2	13.24
LH2846	BL1446		4x6				73.18	382.6	451.2	16.51
LH2866	BL1466		6x6				86.39	578.3	682.4	19.79
LH2888	BL1488		8x8				112.80	765.1	902.8	26.35
LH3222	BL1622	50.80	2x2	48.26	*7.20	17.46	39.01	289.1	341.1	8.78
LH3223	BL1623		2x3				46.58	289.1	341.1	10.90
LH3234	BL1634		3x4				61.72	440.4	519.6	15.15
LH3244	BL1644		4x4				69.29	573.8	680.4	17.27
LH3246	BL1646		4x6				84.43	578.3	680.4	21.53
LH3266	BL1666		6x6				99.57	857.4	1000.7	25.88
LH3288	BL1688		8x8				129.84	1156.5	1364.6	34.29

\*: 有两种链板厚度，除上述表中标注的7.20mm之外，另一种厚度为7.52mm。

\*: We have two kinds of chain plate thickness. Besides the 7.20mm in above table, the other thickness is 7.52 mm.

**板式链**  
Leaf chains



**LL系列板式链条 Leaf chains (LL series)**

ISO链号 ISO Chain No.	节距 Pitch	链板组合 Plate lacing	链板高度 Plate depth	链板厚度 Plate thickness	销轴直径 Pin diameter	销轴长度 Pin length	抗拉强度 Tensile strength	平均抗拉强度 Average tensile strength	每米长重 Weight per meter
	P		h <sub>2</sub> max	T max	d <sub>2</sub> max	L max	Q min	Q <sub>0</sub>	q
	mm		mm	mm	mm	mm	kN	kN	kg/m
LL0622	9.525	2x2	8.2	1.04	3.28	6.2	9	9.9	0.22
LL0644		4x4				10.7	18	19.8	0.42
LL0666		6x6				14.9	24.9	27.4	0.62
LL0822	12.700	2x2	10.6	1.60	4.45	8.9	18.2	20.4	0.42
LL0844		4x4				15.6	36.4	40.7	0.84
LL0866		6x6				22.0	54.6	60.0	1.24
LL0888		8x8				28.5	72.8	80.0	1.64
LL1022	15.875	2x2	13.7	1.60	5.08	9.2	22.7	25.5	0.54
LL1044		4x4				15.8	45.4	51.0	1.06
LL1066		6x6				22.1	68.1	76.3	1.57
LL1088		8x8				28.8	90.8	101.9	2.10
LL1222	19.050	2x2	16.0	1.85	5.72	10.4	29.5	33.2	0.73
LL1244		4x4				17.9	59	66.4	1.44
LL1266		6x6				25.4	88.5	99.7	2.15
LL1288		8x8				32.9	118	132.9	2.84
LL1622	25.40	2x2	21.00	3.10	8.28	17.2	58	76.3	1.52
LL1644		4x4				29.6	116	152.6	2.90
LL1666		6x6				42.4	174	228.9	4.30
LL1688		8x8				54.9	232	305.2	5.71
LL2022	31.75	2x2	26.40	3.70	10.19	20.1	95	109.2	2.33
LL2044		4x4				33.8	190	218.5	4.40
LL2066		6x6				50.1	285	324.6	6.79
LL2088		8x8				64.0	380	435.1	8.90
LL2422	38.10	2x2	33.40	5.00	14.63	28.4	170	195.5	4.47
LL2444		4x4				46.3	340	380.8	8.22
LL2466		6x6				66.4	510	571.2	12.22
LL2488		8x8				86.6	680	775.2	16.30
LL2822	44.45	2x2	37.08	6.00	15.90	32.2	200	245.0	5.40
LL2844		4x4				56.4	400	490.0	10.53
LL2866		6x6				80.8	600	735.0	15.68
LL2888		8x8				105.2	800	980.0	20.83
LL3222	50.80	2x2	42.00	6.40	17.81	34.8	260	291.2	6.39
LL3244		4x4				60.6	520	582.4	12.46
LL3266		6x6				86.4	780	873.6	18.52
LL3288		8x8				112.2	1040	1176.0	24.65
LL4022	63.50	2x2	52.76	8.00	22.89	42.2	360	403.2	10.36
LL4044		4x4				74.4	780	873.6	20.22
LL4066		6x6				106.5	1080	1209.6	30.07
LL4088		8x8				140.0	1440	1747.2	39.98