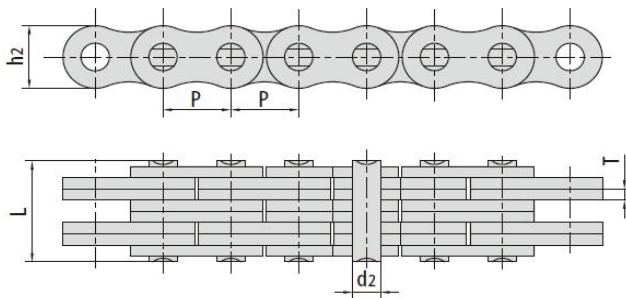
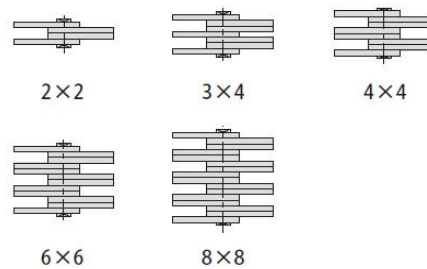


## 板式链

Leaf chains



链板组合  
Plate lacing



AL系列板式链条 Leaf chains (AL series)

| JIS<br>链号<br>JIS<br>Chain No. | 节距 Pitch | 链板组合<br>Plate lacing | 链板高度<br>Plate depth | 链板厚度<br>Plate thickness | 销轴直径<br>Pin diameter | 销轴长度<br>Pin length | 抗拉强度<br>Tensile strength | 平均抗拉强度<br>Average tensile strength | 每米长重<br>Weight per meter |
|-------------------------------|----------|----------------------|---------------------|-------------------------|----------------------|--------------------|--------------------------|------------------------------------|--------------------------|
|                               | P        |                      | h <sub>2</sub> max  | T max                   | d <sub>2</sub> max   | L max              | Q min                    | Q <sub>0</sub>                     | q                        |
|                               | mm       |                      | mm                  | mm                      | mm                   | mm                 | kN                       | kN                                 | kg/m                     |
| AL322                         | 9.525    | 2×2                  | 7.7                 | 1.30                    | 3.58                 | 6.80               | 9                        | 10.2                               | 0.23                     |
| AL344                         |          | 4×4                  |                     |                         |                      | 11.60              | 18                       | 20.0                               | 0.46                     |
| AL422                         | 12.700   | 2×2                  | 10.4                | 1.50                    | 3.96                 | 8.30               | 14.7                     | 16.9                               | 0.39                     |
| AL444                         |          | 4×4                  |                     |                         |                      | 14.40              | 29.4                     | 35.2                               | 0.74                     |
| AL466                         |          | 6×6                  |                     |                         |                      | 20.50              | 44                       | 52.7                               | 1.13                     |
| AL522                         | 15.875   | 2×2                  | 12.8                | 2.03                    | 5.08                 | 11.05              | 24.5                     | 28.6                               | 0.64                     |
| AL534                         |          | 3×4                  |                     |                         |                      | 17.00              | 36.8                     | 46.0                               | 1.10                     |
| AL544                         |          | 4×4                  |                     |                         |                      | 19.40              | 48.9                     | 62.4                               | 1.25                     |
| AL566                         |          | 6×6                  |                     |                         |                      | 27.50              | 73.4                     | 93.8                               | 1.79                     |
| AL622                         | 19.050   | 2×2                  | 15.6                | 2.42                    | 5.94                 | 13.00              | 33.4                     | 44.4                               | 0.87                     |
| AL644                         |          | 4×4                  |                     |                         |                      | 22.70              | 66.7                     | 78.8                               | 1.70                     |
| AL666                         |          | 6×6                  |                     |                         |                      | 32.20              | 100.1                    | 118.6                              | 2.53                     |
| AL688                         |          | 8×8                  |                     |                         |                      | 42.20              | 133.4                    | 156.6                              | 3.37                     |
| AL822                         | 25.400   | 2×2                  | 20.8                | 3.25                    | 7.92                 | 16.20              | 57.9                     | 68.6                               | 1.57                     |
| AL844                         |          | 4×4                  |                     |                         |                      | 29.40              | 115.7                    | 135.6                              | 3.08                     |
| AL866                         |          | 6×6                  |                     |                         |                      | 44.20              | 173.5                    | 202.3                              | 4.62                     |
| AL888                         |          | 8×8                  |                     |                         |                      | 55.50              | 231.4                    | 245.0                              | 6.12                     |
| AL1022                        | 31.750   | 2×2                  | 25.6                | 4.00                    | 9.53                 | 19.60              | 84.5                     | 107.1                              | 2.51                     |
| AL1044                        |          | 4×4                  |                     |                         |                      | 36.40              | 169                      | 203.6                              | 4.95                     |
| AL1066                        |          | 6×6                  |                     |                         |                      | 52.30              | 253.5                    | 315.3                              | 7.39                     |
| AL1088                        |          | 8×8                  |                     |                         |                      | 68.50              | 338                      | 421.2                              | 9.83                     |
| AL1222                        | 38.100   | 2×2                  | 30.5                | 4.80                    | 11.10                | 24.30              | 120.1                    | 151.1                              | 3.65                     |
| AL1244                        |          | 4×4                  |                     |                         |                      | 43.80              | 240.2                    | 299.7                              | 7.05                     |
| AL1266                        |          | 6×6                  |                     |                         |                      | 63.20              | 360.3                    | 426.3                              | 10.50                    |
| AL1288                        |          | 8×8                  |                     |                         |                      | 82.60              | 480.4                    | 568.4                              | 14.03                    |
| AL1444                        | 44.450   | 4×4                  | 36.4                | 5.60                    | 12.70                | 51.30              | 302.5                    | 413.6                              | 9.80                     |
| AL1466                        |          | 6×6                  |                     |                         |                      | 74.50              | 453.7                    | 620.4                              | 14.66                    |
| AL1644                        | 50.800   | 4×4                  | 41.6                | 6.40                    | 14.21                | 58.00              | 382.5                    | 522.8                              | 12.90                    |
| AL1666                        |          | 6×6                  |                     |                         |                      | 83.80              | 573.8                    | 783.6                              | 19.27                    |
| AL1688                        |          | 8×8                  |                     |                         |                      | 109.50             | 765                      | 1045.5                             | 25.64                    |