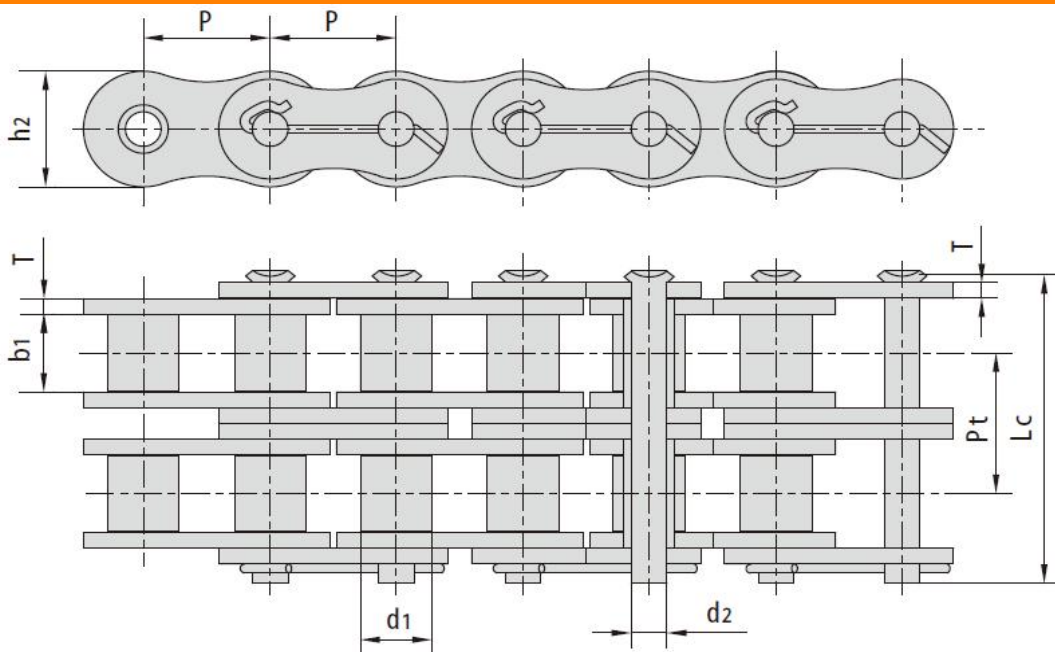


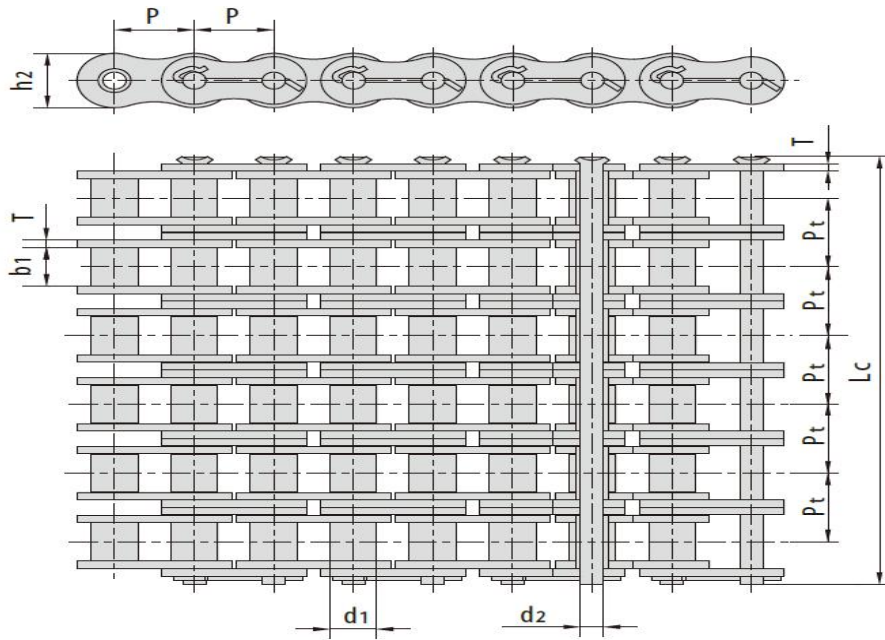
石油链  
Oil field



单排、双排、三排 Simplex, Duplex & Triplex strands

ANSI 链号 ANSI Chain No.	华宇 链号 Huayu Chain No.	节距 Pitch		滚子直径 Roller diameter	内节内宽 Width between inner plates	销轴直径 Pin diameter	销轴长度 Pin length	内链板 高度 Inner plate depth	链板厚度 Plate thickness	排距 Transverse pitch	抗拉强度 Tensile strength	每米长重 Weight per meter
		P		d1 max	b1 min	d2 max	Lc max	h2 max	T max	Pt	Q min	q
		mm	inch	mm	mm	mm	mm	mm	mm	mm	kN	kg/m
80	16S-1	25.40	1.00	15.88	15.75	7.92	37.55	24.1	3.25	-	55.6	2.6
100	20S-1	31.75	1 1/4	19.05	18.90	9.53	44.30	30	4	-	86.87	3.91
120	24S-1	38.10	1 1/2	22.23	25.22	11.10	54.40	36.2	4.8	-	125.1	5.62
140	28S-1	44.45	1 3/4	25.40	25.22	12.70	59.00	42.2	5.6	-	170.27	7.5
160	32S-1	50.80	2.00	28.58	31.55	14.27	69.60	48.2	6.4	-	222.4	10.1
180	36S-1	57.15	2 1/4	35.71	35.48	17.46	78.60	54.3	7.2	-	281.47	13.45
200	40S-1	63.50	2 1/2	39.68	37.85	19.85	87.20	60.3	8	-	347.5	16.15
80-2	16S-2	25.40	1.00	15.88	15.75	7.92	66.80	24.1	3.25	29.29	111.2	5.15
100-2	20S-2	31.75	1 1/4	19.05	18.90	9.53	80.50	30.1	4	35.76	173.74	7.8
120-2	24S-2	38.10	1 1/2	22.23	25.22	11.10	99.70	36.2	4.8	45.44	250.2	11.7
140-2	28S-2	44.45	1 3/4	25.40	25.22	12.70	107.80	42.2	5.6	48.87	340.54	15.14
160-2	32S-2	50.80	2.00	28.58	31.55	14.27	127.50	48.2	6.4	58.55	444.8	20.14
180-2	36S-2	57.15	2 1/4	35.71	35.48	17.46	144.40	54.3	7.2	65.84	562.94	29.22
200-2	40S-2	63.50	2 1/2	39.68	37.85	19.85	158.80	60.3	8	71.55	695	32.24
80-3	16S-3	25.40	1.00	15.88	15.75	7.92	96.10	24.1	3.25	29.29	166.8	7.89
100-3	20S-3	31.75	1 1/4	19.05	18.90	9.53	116.30	30.1	4	35.76	260.61	11.77
120-3	24S-3	38.10	1 1/2	22.23	25.22	11.10	145.20	36.2	4.8	45.44	375.3	17.53
140-3	28S-3	44.45	1 3/4	25.40	25.22	12.70	156.80	42.2	5.6	48.87	510.81	22.2
160-3	32S-3	50.80	2.00	28.58	31.55	14.27	186.60	48.2	6.4	58.55	667.2	30.02
180-3	36S-3	57.15	2 1/4	35.71	35.48	17.46	210.20	54.3	7.2	65.84	844.41	38.22
200-3	40S-3	63.50	2 1/2	39.68	37.85	19.85	230.40	60.3	8	71.55	1042.5	49.03
200H-3	40HS-3	63.5	2 1/2	39.68	37.85	19.85	249.6	60.3	9.5	78.31	1042.5	56.74

石油链  
Oil field



多排 Multiple strands

ANSI 链号 ANSI Chain No.	华宇 链号 Huayu Chain No.	节距 Pitch		滚子直径 Roller diameter	内节内宽 Width between inner plates	销轴直径 Pin diameter	销轴长度 Pin length	内链板 高度 Inner plate depth	链板厚度 Plate thickness	排距 Transverse pitch	抗拉强度 Tensile strength	每米长重 Weight per meter
		P		d1 max	b1 min	d2 max	Lc max	h2 max	T max	Pt	Q min	q
		mm	inch	mm	mm	mm	mm	mm	mm	mm	mm	kN
80-4	16S-4	25.40	1.00	15.88	15.75	7.92	122.90	24.1	3.25	29.29	222.4	10.24
100-4	20S-4	31.75	1 1/4	19.05	18.90	9.53	151.50	30.1	4	35.76	347.48	15.39
120-4	24S-4	38.10	1 1/2	22.23	25.22	11.10	190.60	36.2	4.8	45.44	500.4	22.19
140-4	28S-4	44.45	1 3/4	25.40	25.22	12.70	205.70	42.2	5.6	48.87	681.08	29.63
160-4	32S-4	50.80	2.00	28.58	31.55	14.27	245.20	48.2	6.4	58.55	889.6	39.94
200-4	40S-4	63.50	2 1/2	39.68	37.85	19.85	302.00	60.3	8	71.55	1390	63.6
80-5	16S-5	25.40	1.00	15.88	15.75	7.92	152.20	24.1	3.25	29.29	278	12.79
100-5	20S-5	31.75	1 1/4	19.05	18.90	9.53	187.80	30.1	4	35.76	434.35	19.22
120-5	24S-5	38.10	1 1/2	22.23	25.22	11.10	236.10	36.2	4.8	45.44	625.5	27.71
140-5	28S-5	44.45	1 3/4	25.40	25.22	12.70	254.60	42.2	5.6	48.87	851.35	39.2
160-5	32S-5	50.80	2.00	28.58	31.75	14.27	303.30	48.2	6.4	58.55	1112	52.4
80-6	16S-6	25.40	1.00	15.88	15.75	7.92	181.50	24.1	3.25	29.29	333.6	15.34
100-6	20S-6	31.75	1 1/4	19.05	18.90	9.53	223.60	30.1	4	35.76	521.22	23.05
120-6	24S-6	38.10	1 1/2	22.23	25.22	11.10	281.60	36.2	4.8	45.44	750.6	33.24
140-6	28S-6	44.45	1 3/4	25.40	25.22	12.70	303.40	42.2	5.6	48.87	1021.62	44.38
160-6	32S-6	50.80	2.00	28.58	31.55	14.27	362.30	48.2	6.4	58.55	1334.4	59.83
200-6	40S-6	63.50	2 1/2	39.68	37.85	19.85	445.00	60.3	8	71.55	2085	95.23
80-8	16S-8	25.40	1.00	15.88	15.75	7.92	240.10	24.1	3.25	29.29	444.8	20.44
100-8	20S-8	31.75	1 1/4	19.05	18.90	9.53	295.10	30.1	4	35.76	694.96	30.71
120-8	24S-8	38.10	1 1/2	22.23	25.22	11.10	372.40	36.2	4.8	45.44	1000.8	44.28
140-8	28S-8	44.45	1 3/4	25.40	25.22	12.70	401.10	42.2	5.6	48.87	1362.16	62.21