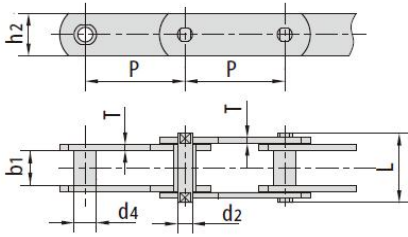


**M系列输送链**

**Conveyor chains (M series)**

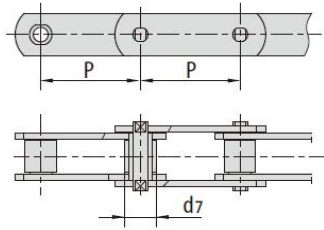
1.无滚子

1. without rollers



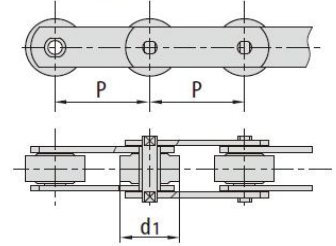
2.带S型小滚子

2. with S small rollers type



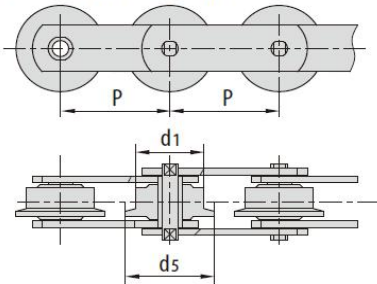
3.带P型大滚子

3. with P large rollers type



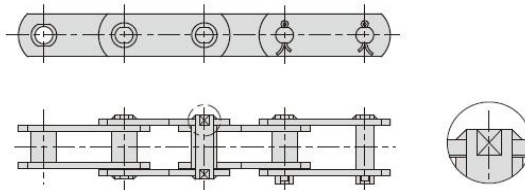
4.带F型带边滚子

4. with F flanged rollers type



5.销轴铆头后采用焊接加固

5. Welded pins with plates



**M系列输送链 Conveyor chains (M series)**

ISO链号 ISO Chain No.	节距 Pitch								滚子直径 Roller diameter			套筒直径 Bush diameter
	P								d <sub>1</sub> max	d <sub>7</sub> max	d <sub>5</sub> max	d <sub>4</sub> max
	mm								mm	mm	mm	mm
M20	*40.0	50.0	63.0	80.0	100.0	125.0	160.0		25.0	12.5	32.0	9.0
M28	*50.0	63.0	80.0	100.0	125.0	160.0	200.0		30.0	15.0	36.0	10.0
M40	63.0	80.0	100.0	125.0	160.0	200.0	250.0		36.0	18.0	42.0	12.5
M56	*63.0	80.0	100.0	125.0	160.0	200.0	250.0		42.0	21.0	50.0	15.0
M80	80.0	100.0	125.0	160.0	200.0	250.0	315.0		50.0	25.0	60.0	18.0
M112	*80.0	100.0	125.0	160.0	200.0	250.0	315.0	400.0	60.0	30.0	70.0	21.0
M160	*100.0	125.0	160.0	200.0	250.0	315.0	400.0	500.0	70.0	36.0	85.0	25.0
M224	*125.0	160.0	200.0	250.0	315.0	400.0	500.0	630.0	85.0	42.0	100.0	30.0
M315	*160.0	200.0	250.0	315.0	400.0	500.0	630.0		100.0	50.0	120.0	36.0
M450	200.0	250.0	315.0	400.0	500.0	630.0	800.0		120.0	60.0	140.0	42.0
ISO链号 ISO Chain No.	内节内宽 Width between inner plates		销轴直径 Pin diameter		销轴长度 Pin length		链板高度 Plate depth		链板厚度 Plate thickness		抗拉强度 Tensile strength	
	b1min		d2max		Lmax		h2max		Tmax		Qmin	
	mm		mm		mm		mm		mm		kN	
M20	16		6		35		19		2.5		20	
M28	18		7		40		21		3		28	
M40	20		8.5		45		26		3.5		40	
M56	24		10		52		31		4		56	
M80	28		12		62		36		5		80	
M112	32		15		73		41		6		112	
M160	37		18		85		51		7		160	
M224	43		21		98		62		8		224	
M315	48		25		112		72		10		315	
M450	56		30		135		82		12		450	